

PROVIDENCE, R. I.
CITY ENGINEER'S OFFICE,
STREET LINE DEPT.

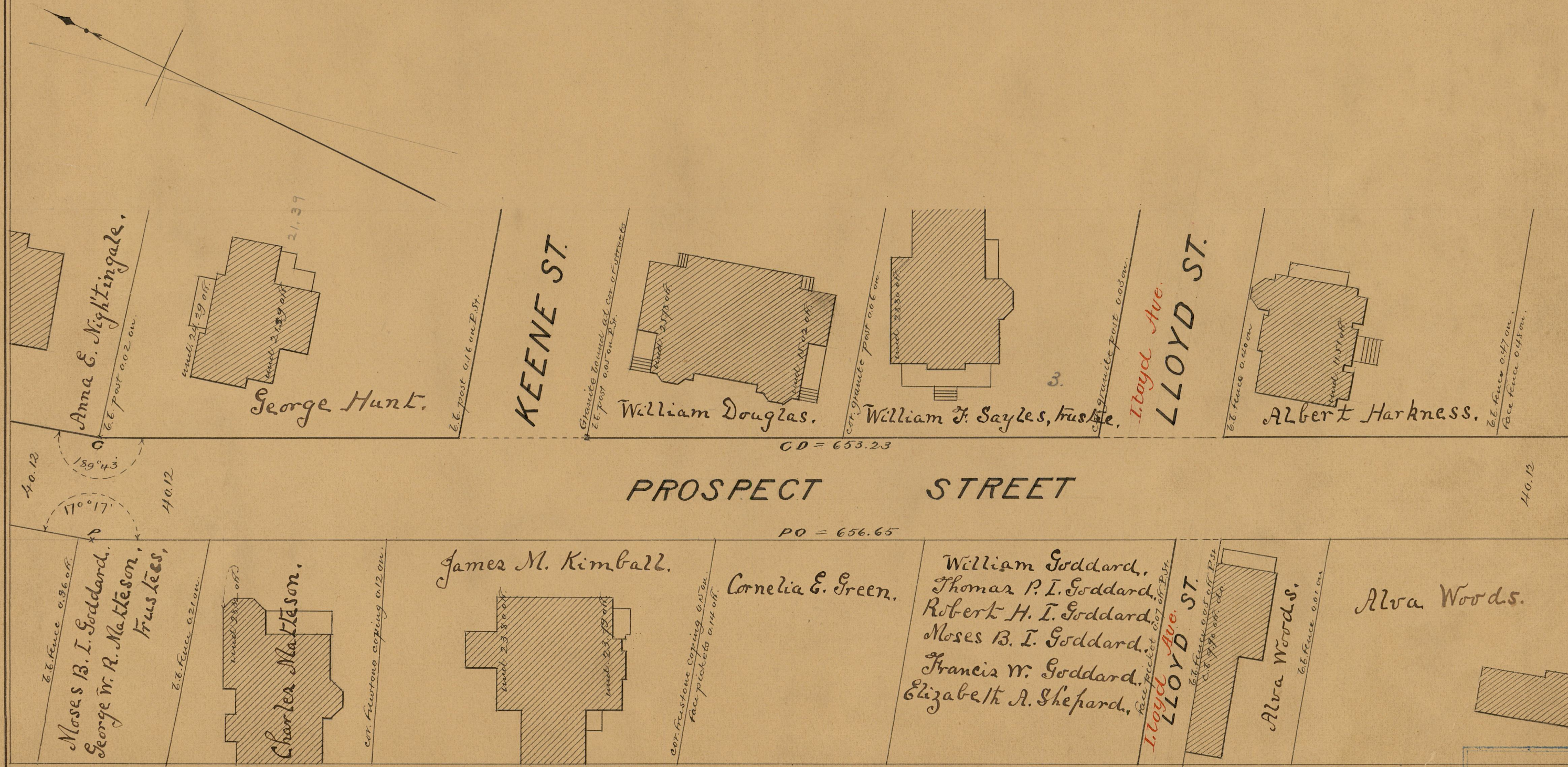
Mar 18, 1886

011715

Providence R. I.
This map accompanies
our report of this date.

PLAT OF PROSPECT STREET

FROM OLNEY ST. TO GEORGE ST.
IN SEVEN SHEETS
SCALE 40 FEET PER INCH



OFFICE NO.	8785
DRAWER	83
SHEET	A-3